

Input data

System of measurement		Metric
Input type		Gear motor
Input speed	[rpm]	1400
Output speed	[rpm]	140
Ratio (i=)		10
Frequency	[Hz]	50
Input options		IEC
Requested input power	[kW]	0.37
Service factor		3.5
Thermal power	[kW]	1.31

Output data

Gear unit	M RS 50 S (bolted) 10 71 B14 AS 24x45 LH MT 0.37 kW 71 B4 B14 X3 B3	
------------------	--	--

Type		RS - Worm speed reducers
Input type		M
Size		50
Ratio (i=)		10
Input flange		B14
Mounting position		B3
Input speed	[rpm]	1400
Output speed	[rpm]	140
Rated output torque	[Nm]	21.2
Service Factor		3.5
Efficiency		0.84
Inertia moment	[kgm ²]	0.000054

Gear unit configuration

Output shaft		Single output shaft
Fixing		Feet
Version		S (bolted)

Output radial and axial loads

Ball bearings output radial load	[N]	1450
Taper bearings output radial load	[N]	2000
Ball bearings output axial load	[N]	290
Taper bearings output axial load	[N]	400

Accessories

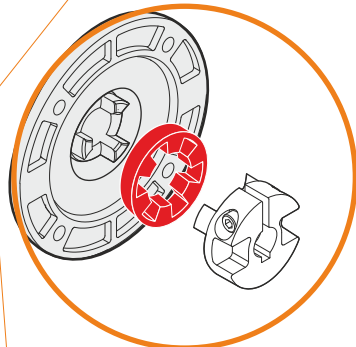
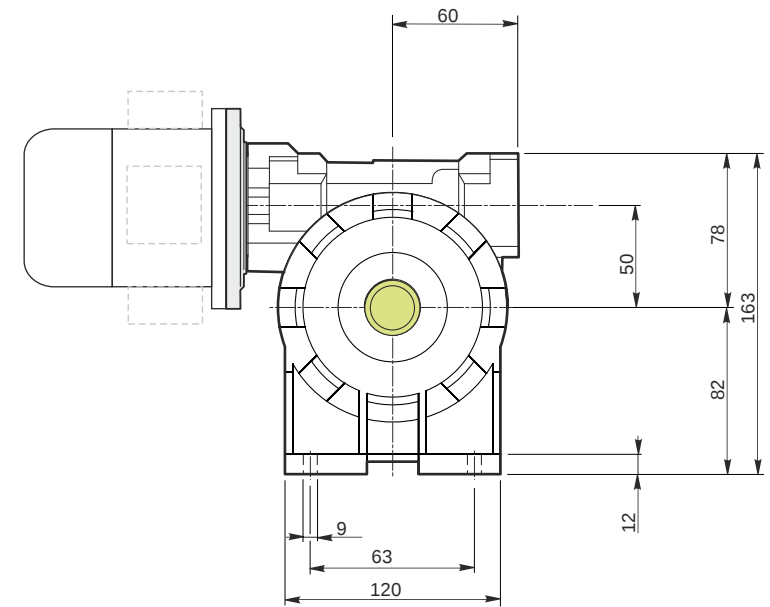
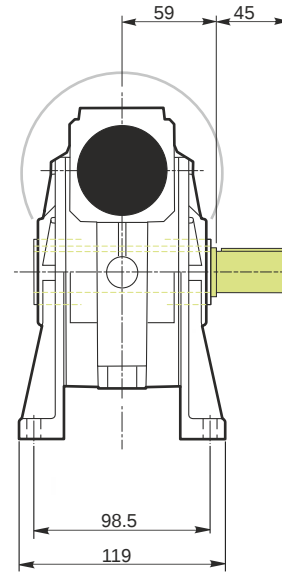
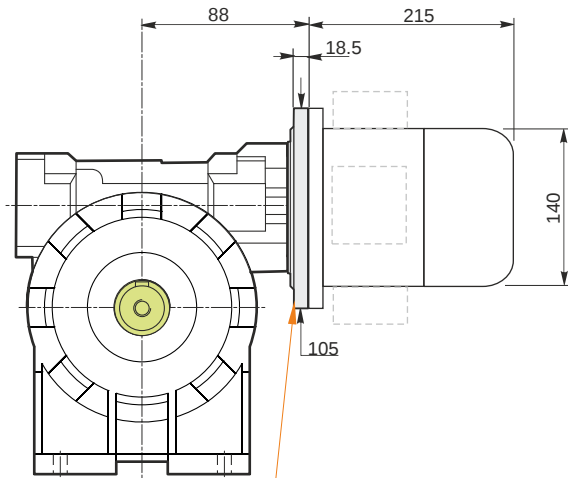
Single output shaft		AS 24x45 LH
---------------------	--	-------------

Electric motor

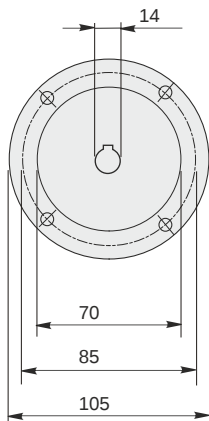
Size		71 B4
Poles		4
Power	[kW]	0.37

Electric motor configuration

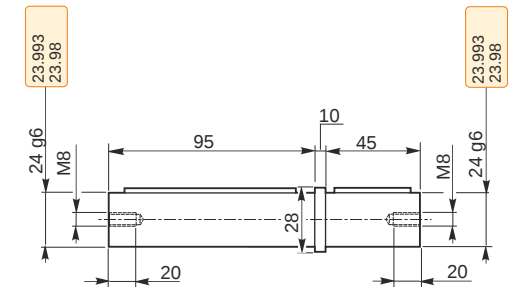
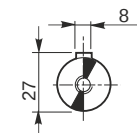
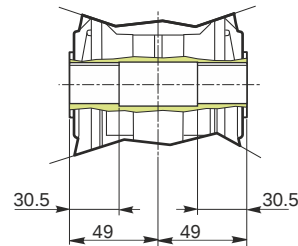
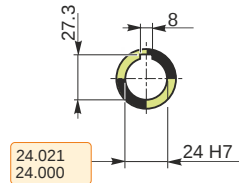
Motor flange		B14
Terminal box position		X3



This gear unit is provided with an elastic coupling motor fitting (more info)

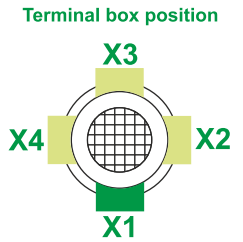
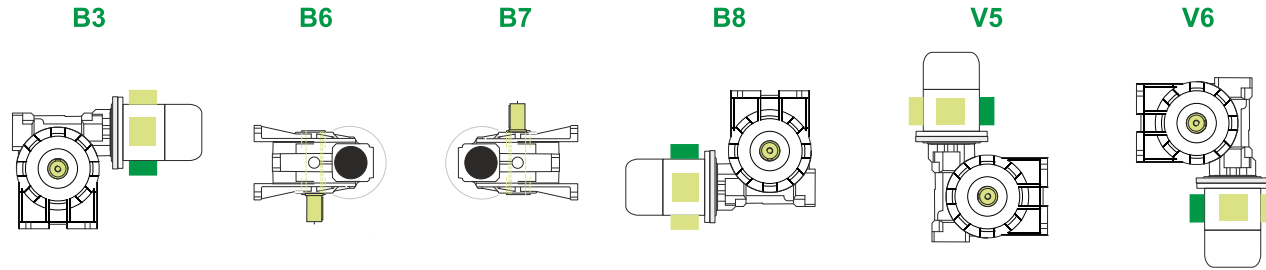


Hollow output shaft



! Output shaft is delivered as loose accessory

Mounting positions



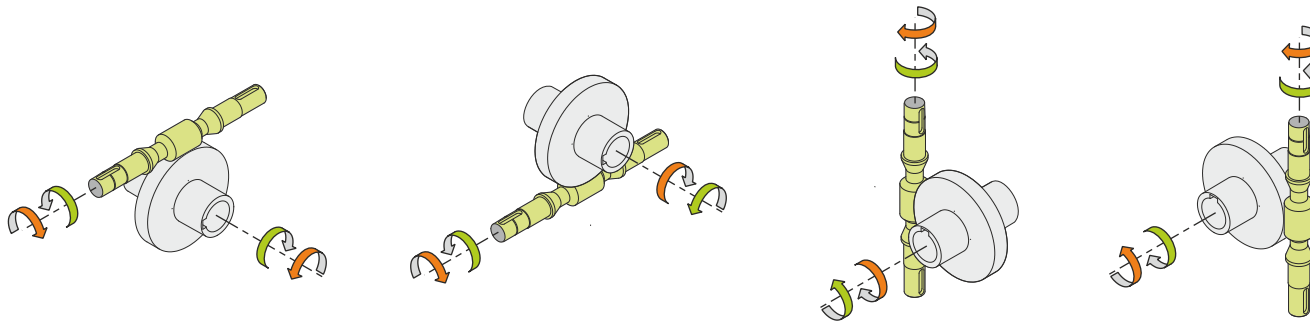
0.13



← Oil quantity [litres]

Lubricant type: Long life synthetic oil ISO VG320

Direction of rotation



Weight

Gear unit [kg]	3.8
Electric motor [kg]	6.2

Gearing data

Axial module	2.5
Number of starts	3
Lead angle	16° 41'
Pressure angle	20°

Backdriving

Static back-driving
Quick back-driving
Dynamic back-driving